

# *TRANSCOM*

*Presentation on Regional Collaboration Leads to a  
Coordinated Construction Management*

*National Operations Center of Excellence (NOCoE)*

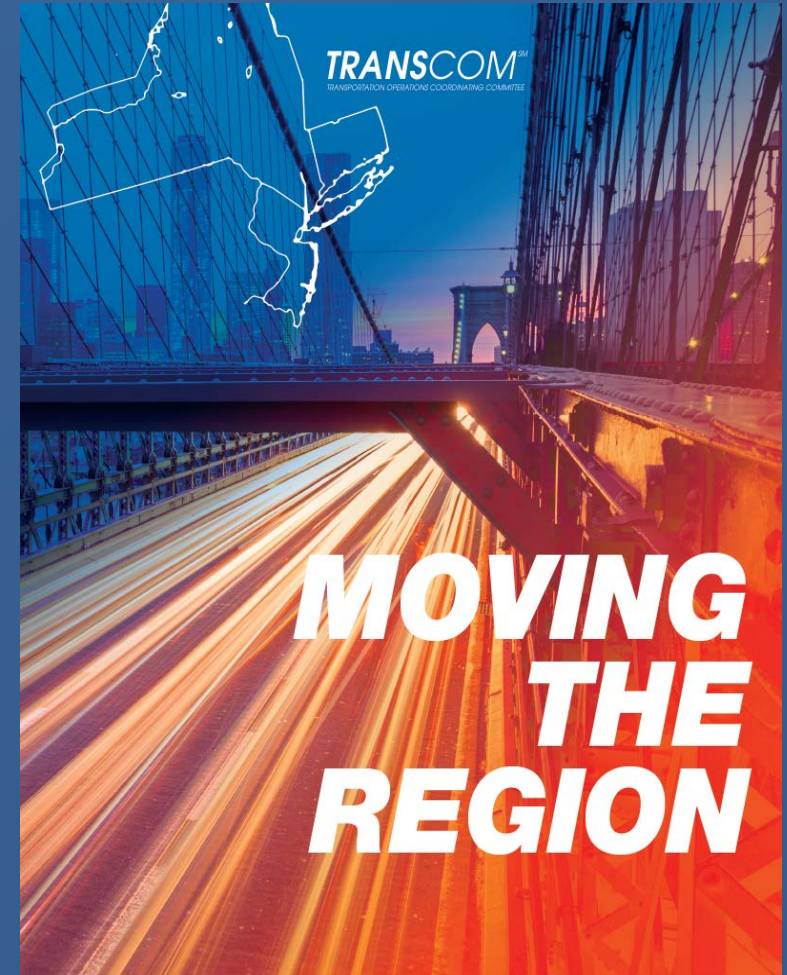
*February 18, 2021*

# Agenda

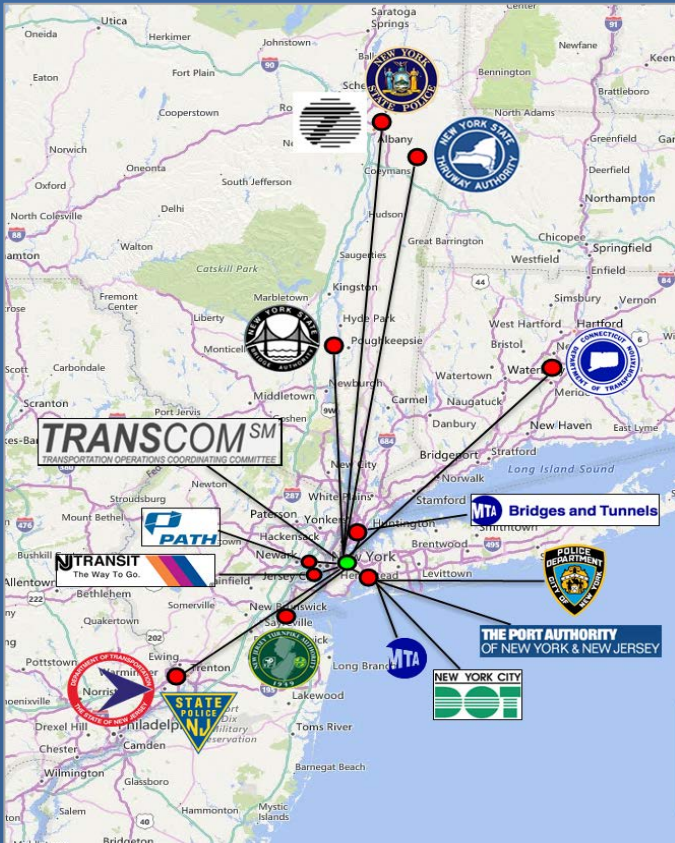
- TRANSCOM Overview
  - Mission and Function
  - History, Structure, Role, and Systems
- Regional Construction Coordination
  - Institutional
  - Technology

# TRANSCOM Overview

- The Need for Regional Coordination
  - One regional economy, one transportation system, and one customer base – region of 24 million
  - No Central Authority, 16 Jurisdictions
  - Benefits of regional operation achieved through TRANSCOM's Cooperative Model
  - TRANSCOM provides essential elements for regional coordination & decision making:
    - Accurate data from ITS Technology
    - Strong working relationships among agencies



# TRANSCOM Member Agencies



- New York State Department of Transportation
- New Jersey Department of Transportation
- Connecticut Department of Transportation
- New York City Department of Transportation
- The Port Authority of New York and New Jersey
- New Jersey Turnpike Authority
- Metropolitan Transportation Authority
- Metropolitan Transportation Authority Bridges and Tunnels
- New York City Transit
- New Jersey Transit
- Port Authority Trans-Hudson
- New York State Thruway Authority
- New York State Bridges and Tunnels Authority
- New York City Police department
- New York State Police Department
- New Jersey State Police

# Mission Statement

TRANSCOM improves the mobility and safety of the traveling public by supporting its member agencies through inter-agency communication and the enhanced utilization of their existing traffic and transportation management systems. Further, as additional systems become available, TRANSCOM is a forum for ensuring that they are implemented in a coordinated manner.

As a coalition of transportation and public safety agencies, TRANSCOM serves as a focus for bringing even greater funding into the region to improve regional traffic and transportation management.

## TRANSCOM Functions

- Primary Mission: Regional Operations
  - Regional Incident Management - 24/7
  - Regional Construction Coordination
  - Regional Implementation of ITS Systems
- Additional Mission: Real-Time Data Source for Member Agencies



# Organizational History

- Original Concept Came from a 1986 Port Authority of NY&NJ Trans-Hudson Study:
  - Major incidents & construction require a regional approach
- Developed as Administrative Unit of the Port Authority
- 1999: Became 501(c)3 Non-Profit (Direction by Member Government Agencies Continues)

# Pre-TRANSCOM





# TRANSCOM created to Coordinate Regional Construction





# Regional Coordination in Strategic Plan

- 1.1 Improve transportation demand management across the regional transportation network.
  - 1.1.1 Coordinate & develop a common operating procedure during emergencies.
  - 1.1.2 Utilize and enhance central database for planned closures & transit construction.
  - 1.1.3 Develop and refine standard regional traffic management plans to enhance preparedness and responsiveness to major incidents, construction activities, and other network disruptions.

# Regional Construction Coordination Meetings that TRANSCOM Attends

- Bi-weekly Meeting Facilitated by NYSDOT and MTA B&T
  - Take notes of their projects to see if they will have an impact on other projects in the region
    - Send Resource Request Memos to other agencies about stages of projects in the region
  - Let's New York Agencies know of New Jersey construction
- NJDOT facilitates a weekly Construction Coordination Meeting
  - Current and future projects
  - TRANSCOM mentions any other projects that may have an impact on them and offers assistance
- PANYNJ hosts a Quarterly meeting for Construction Coordination
- NJIT facilitates the Hudson County Task Force (Restore 495 Task Force)
- NYSDOT Field Project Meetings etc.

# Regional Construction Coordination Meetings that TRANSCOM facilitates

- TRANSCOM facilitates a monthly meeting for the New Jersey Task Force
  - NJDOT, NJTA, PANYNJ presenters (NYC DOT, NYSDOT, and NYCT Bus attend)
  - Special Events in the Region are also discussed to help plan for construction
- Yearly Meeting for the Construction Coordination Tool
  - The meeting creates the database for the tool
- Weekend Advisory Meeting
  - Every Member Agency is invited to discuss the construction plans for the upcoming weekend
  - Allows for any last-minute coordination to avoid major conflicts
- Project Specific Meetings
  - Ex. Jersey Ave and 12<sup>th</sup> St. Intersection Project in Jersey City, NJ



# TRANSCOM Systems

- Event Entry and Sharing Tool
  - T-REX
- TIMED
- TRANSCOM Data Fusion Engine / SPATEL Tools
  - Regional Highway Travel Times
  - Regional Real-time Transit Conditions
  - Historical / Archived Travel Time and Events
  - Regional CCTV Viewer / Video Walls
  - Roadway Weather Integration (NYSTA RWIS, PANYNJ and MTA B&T Anemometers, Third Party)
  - NYC Evacuation Layer
  - Includes public agencies, local municipalities, MPOs, private organizations, universities and others.



# Regional Construction Tool

- A web-based database where all the construction projects within the region are entered by the Member Agencies
- Used as a tool to support Member Agency decision making
- In 2020, TRANSCOM added the ability to enter Special Events
  - Allowed for information to refine planned construction activities (schedules/phasing's/etc.).
- Allows for users to filter data to query potential hotspots
- Displays travel time data for key corridors
- Provides a baseline for preconstruction data



# Regional Construction Tool

**TRANSCOM™** REGIONAL HIGHWAY CONSTRUCTION AND PROGRAMMED MAINTENANCE (RHCPM)

Navigation: Home | Dashboard | Conflict Analysis | Report

Welcome rgartzberg

---

Search

Conflict By Area Details

Route 3 Bridge over Northern Secondary & Ramp A, NJ, ... No. of Conflict 5

Project Ref #	Project Description	Conflict Duration	Facility	County	Construction Type	Distance
LPC 08 3460	The project will replace the existing, structurally deficient Route 3 bridge over two rail lines and...		NJ 3	Hudson	bridge replacement	
LPC 083 460	The project will replace the existing, structurally deficient Route 3 bridge over two rail lines and...	02:16:58	NJ 3	Hudson	bridge replacement	0.27
T100.43 5	EASTERN SPUR SB OVER PASSAIC RIVER BRIDGE REHAB PROJECT BTWN INT T5C & 10W STARTS MID-MAR 2019 THRU ...	00:05:00	New Jersey Turnpike Eastern Spur	Hudson	bridge rehabilitation	0.85
...	EASTERN SPUR SB OVER PASSAIC RIVER BRIDGE REHAB		New Jersey Turnpike	Hudson	bridge	

Conflict Duration in dd hh:mm, Distance in miles, (Cont.) indicate continues construction schedule else daily

- ELIZABETH ST crane operations, NY, New York, New York No. of Conflict 3
- NJ 7 EB HACKENSACK RIVER/WITPEN BRIDGE CONTRAC... No. of Conflict 2
- NJ 7 EB HACKENSACK RIVER/WITPEN BRIDGE CONTRAC... No. of Conflict 2
- NJ 7 WB HACKENSACK RIVER/WITPEN BRIDGE CONTRA... No. of Conflict 2
- NJ 7 WB HACKENSACK RIVER/WITPEN BRIDGE CONTRA... No. of Conflict 2
- HOLLAND TUNNEL EB SUPER STORM SANDY REPAIRS T... No. of Conflict 2
- EASTERN SPUR SB OVER PASSAIC RIVER BRIDGE REHAB ... No. of Conflict 2
- EASTERN SPUR SB OVER PASSAIC RIVER BRIDGE REHAB ... No. of Conflict 2
- Route 3 Bridge over Northern Secondary & Ramp A, NJ, ... No. of Conflict 2
- Holland Tunnel South Tube construction, NJ, Hudson, Je... No. of Conflict 2
- Holland Tunnel North Tube construction, NY, New York, ... No. of Conflict 2
- Lincoln Tunnel North Tube tunnel washing, NY, New Yor... No. of Conflict 2
- New Jersey Turnpike - Eastern Spur construction, NJ, Hu... No. of Conflict 2
- 11TH AVENUE VIADUCT RECONSTRUCTION NORTH SECT... No. of Conflict 2
- BROOKLYN BRIDGE EB REHAB PAINTING & RAMP WORK... No. of Conflict 2
- I-280 sign work, NJ, Hudson, Kearny No. of Conflict 2
- I-280 bridge work, NJ, Hudson, Kearny No. of Conflict 2

Site best viewed in: IE 11, Edge 86, Firefox 82, Chrome 86, Safari 13, or higher versions with screen resolution of 1366 x 768 or higher.

Copyright © 2020 TRANSCOM | V 1.0.0



# Regional Construction Tool

RHCPM Projects Dashboard Conflict Analysis Report

Search

Conflict By Area Details

Route 3 Bridge over Northern Secondary & Ramp A, NJ, ... No. of Conflict 5

Project Ref #	Project Description	Conflict Duration	Facility	County	Construction Type	Distance
UPC 08 3460	The project will replace the existing structurally deficient Route 3 bridge over two rail lines and...		NJ 3	Hudson	bridge replacement	
UPC 083 460	The project will replace the existing structurally deficient Route 3 bridge over two rail lines and...	02/16/58	NJ 3	Hudson	bridge replacement	0.27
T160.43 6	EASTERN SPUR SB OVER PASSAIC RIVER BRIDGE REHAB PROJECT BTWN INT 15E & 15W STARTS MID-MAR 2019 THRU ...	00/05/00	New Jersey Turnpike - Eastern Spur	Hudson	bridge rehabilitation	0.85
T160.43 6	EASTERN SPUR SB OVER PASSAIC RIVER BRIDGE REHAB ...		New Jersey Turnpike - Eastern Spur	Hudson	bridge rehabilitation	

Conflict Duration in dd/mm/yyyy, Distance in miles, (cont.) indicates continues construction scheduled also daily

- ELIZABETH ST crane operations, NY, New York, New York No. of Conflict 3
- NJ 7 EB HACKENSACK RIVER/WITTPEN BRIDGE CONTRAC... No. of Conflict 2
- NJ 7 EB HACKENSACK RIVER/WITTPEN BRIDGE CONTRAC... No. of Conflict 2
- NJ 7 WB HACKENSACK RIVER/WITTPEN BRIDGE CONTRA... No. of Conflict 2
- NJ 7 WB HACKENSACK RIVER/WITTPEN BRIDGE CONTRA... No. of Conflict 2
- HOLLAND TUNNEL EB SUPER STORM SANDY REPAIRS T... No. of Conflict 2
- EASTERN SPUR SB OVER PASSAIC RIVER BRIDGE REHAB ... No. of Conflict 2
- EASTERN SPUR SB OVER PASSAIC RIVER BRIDGE REHAB ... No. of Conflict 2
- Route 3 Bridge over Northern Secondary & Ramp A, NJ, ... No. of Conflict 2
- Holland Tunnel South Tube construction, NJ, Hudson, Je... No. of Conflict 2
- Holland Tunnel North Tube construction, NY, New York, ... No. of Conflict 2
- Lincoln Tunnel North Tube tunnel washing, NY, New Yor... No. of Conflict 2
- New Jersey Turnpike - Eastern Spur construction, NJ, Hu... No. of Conflict 2
- 11TH AVENUE VIADUCT RECONSTRUCTION NORTH SECT... No. of Conflict 2
- BROOKLYN BRIDGE EB REHAB PAINTING & RAMP WORK... No. of Conflict 2
- I-280 sign work, NJ, Hudson, Kearny No. of Conflict 2
- I-280 bridge work, NJ, Hudson, Kearny No. of Conflict 2

Event Legend

- Active Construction
- RHCPM Scheduled Construction
- T-REX Scheduled Construction

Map data ©2021 Google. Terms of Use. Report a map issue.

# Tools used for Construction Projects in New York

- Multiple agency projects in the Bronx
- Holland Tunnel Hurricane Sandy Repairs
- Multiple projects in relation to the Van Wyck Expressway reconstruction
- Brooklyn Queens Expressway repairs
  - Short term repairs
  - Long term Triple Cantilever Repair Project ( Atlantic Avenue to Sands St.)

# Regional Construction Coordination – Restore 495

## DFE/SPATEL:

- Expanded on what was done with the Pulaski Skyway (DFE/SPATEL)
- Restore NJ 495 video tutorial created
- 109 trips added to the database:
  - 17 to support Blue Toad installations
  - 11 added with NB Skyway reopening
  - 43 requested by NJ Transit Bus
  - 12 to provide expanded coverage as it relates to XBL
  - 25 requested by NJ DOT for monitoring purposes
  - 1 to support VMS Travel Times
- Project Monitoring tool was created as part of the Regional Conditions Operations Map and is a stand alone tool within the application
- Ops Dashboard assigned additional folders to help with monitoring (video wall, CCTVS)
- Access given for Restore 495: Hoboken, Hudson County EOC, Jersey City Medical Center, North Bergen PD, Secaucus, Secaucus OEM, Union City Police, Weehawken Police





# restore495.org



Get connected and go!

Phil Murphy, Governor | Sheila Oliver, Lieutenant Governor  
Diane Gutierrez-Scaccetti, Commissioner

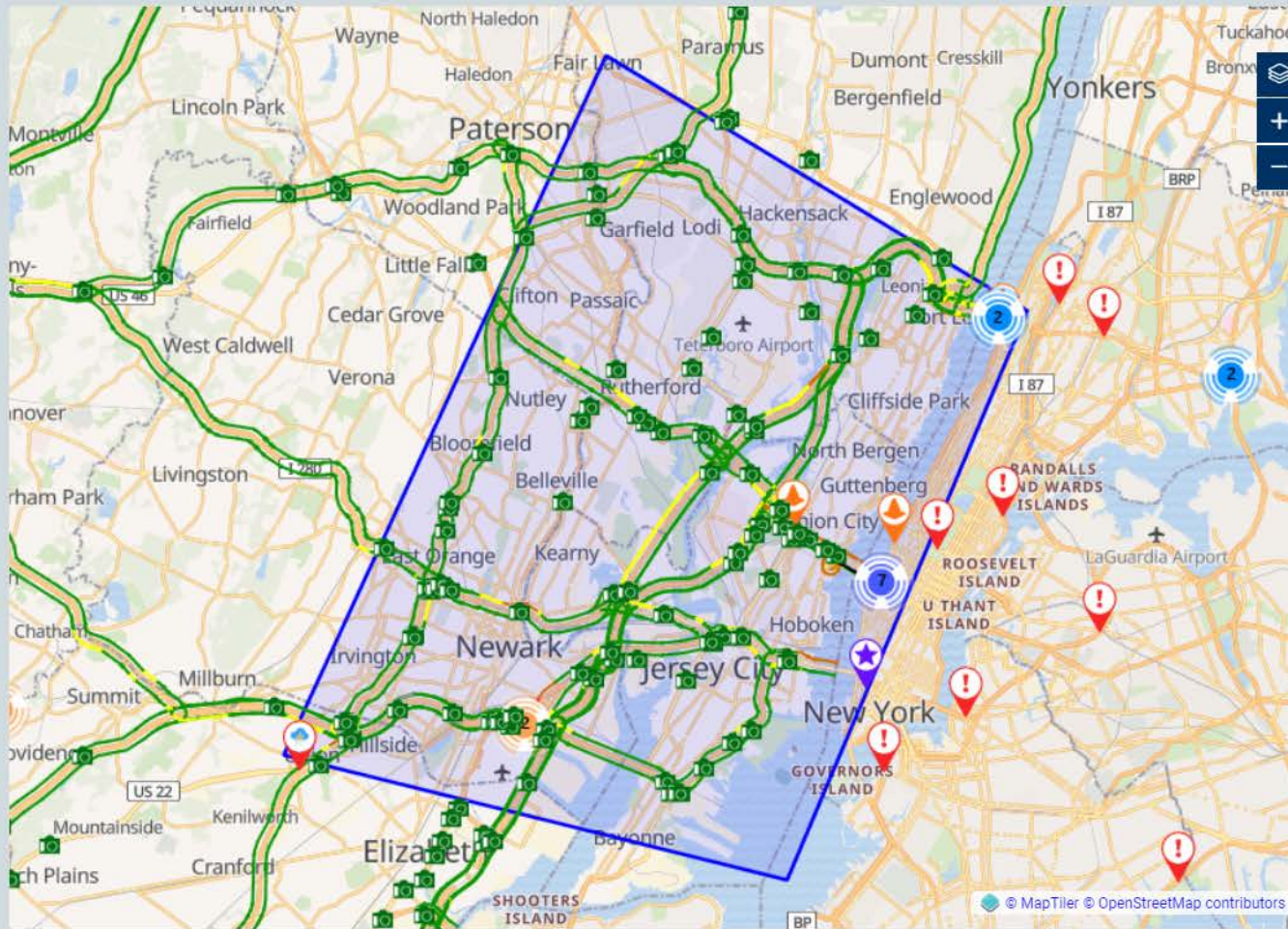
Follow Us

Trenton, NJ 45°F



- Home
- About
- Traffic
- Traffic Map
- Cameras
- Mega Projects
- Travel Links
- FAQs
- 511NJ Partners
- RSS
- Twitter

## Mega Projects



## Mega Projects



Restore NJ 495  
Route 495, Route 1&9/ Paterson Plank Road

[More Information](#)

## Current Incidents

- As of 4:04pm, there are Delays on George Washington Bridge Upper Level westbound New York Side in New York. All lanes open The travel time is 15 minutes on the Cross Bronx Expressway from Jerome Avenue to Interstate 95 at Interstate 80.
- As of 4:03pm, there are Delays on George Washington Bridge Lower Level westbound New York Side in New York. All lanes open The travel time is 15 minutes on the Cross Bronx Expressway from Jerome Avenue to Interstate 95 at Interstate 80.
- As of 9:02am, there's Construction on US 1&9 Express Lanes southbound North of I-78 in Newark. 1 Left lane closed Until 10:30 PM.
- As of 9:00am, there's Construction on US 1&9 Express Lanes northbound North of I-78 in Newark. 1 Left lane closed Until 10:30 PM.
- As of 9:43am, there's Emergency maintenance on George Washington Bridge Lower Level ramp to Riverside Drive in New York. All lanes closed for repairs HR 16.
- As of 8:49am, there's Construction on NJ 495 westbound ramp to southbound US 1&9 in North Bergen Twp. All lanes closed.
- As of 9:44am, there's Operational Activity on Holland Tunnel South Tube eastbound exiting at Exit 3 - Brooklyn in New York. All lanes closed due to NYPD activity.



# Support Agency Decision Making Tools

